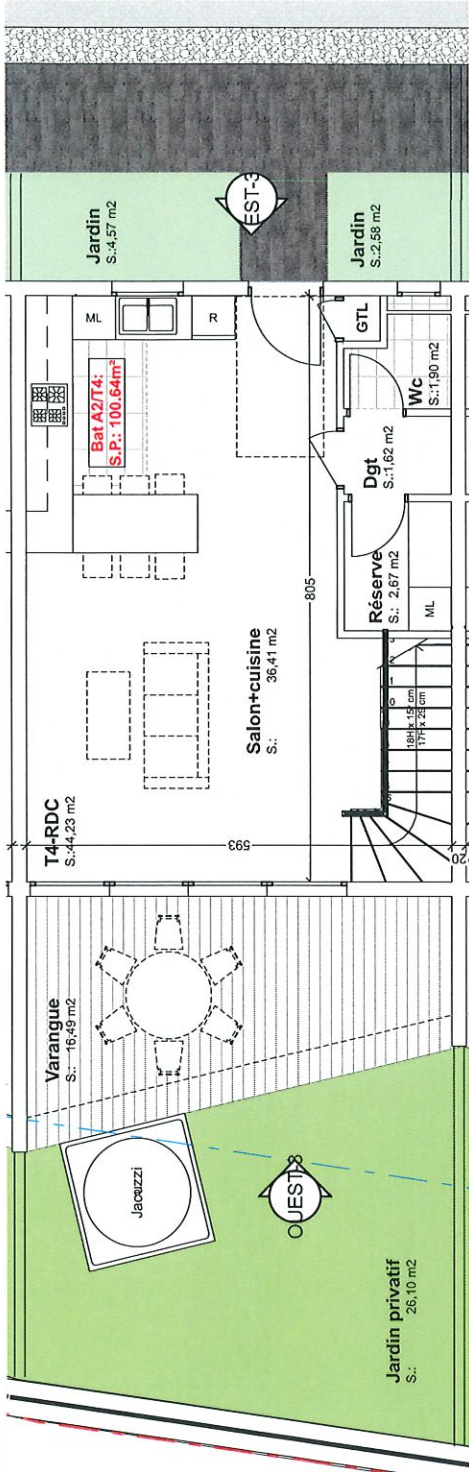
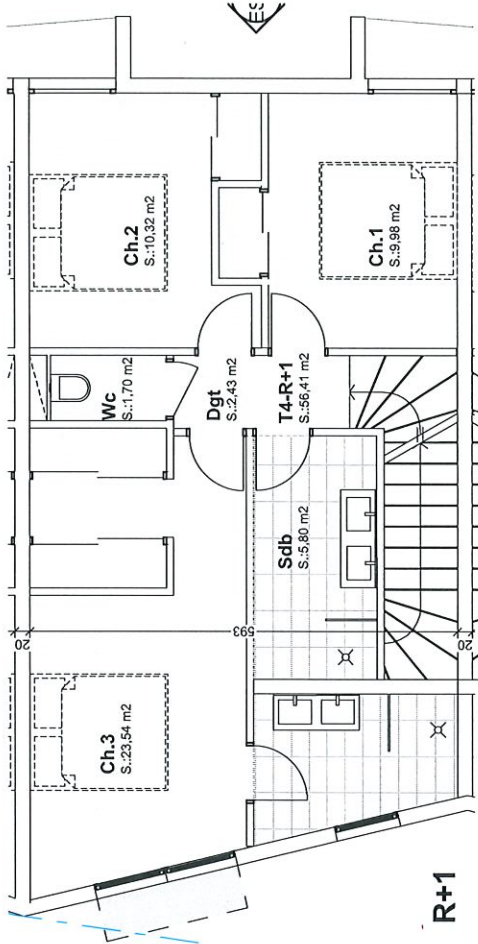


OPERATION "VILLA SUNSET"
8 Logements T1,
Commune de SAINT

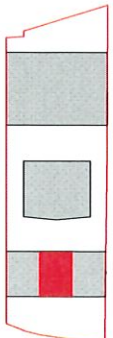
Uve. Mper



RDC



R+1



Date: 14/02/2024
 Etroit par: BR Architecte

Echelle: 1:100

Surfaces Habitables		Surfaces Annexes						Total SA					
Séjour	Dgt	Réserve	Wc	Ch.1	Ch.2	Ch.3	Dressing	S.d.B 1	S.d.B 2	Dgt	W.C	Varangue	Jardin privatif
36,41	1,62	2,67	1,90	9,98	10,32	23,54			5,80	2,43	1,70	16,49	26,10
Total Surfaces Habitables										100,64		16,49	
Type BAT A2/T4		Bâtiment		A		RDC / R+1							
Lgt N° 2		Niveau		170 chemin Dubuisson 97426 St Leu									

+ Jardins 1,58 + 4,57 m²
OPERATION "VILLA SUNSET"
8 Logements T4